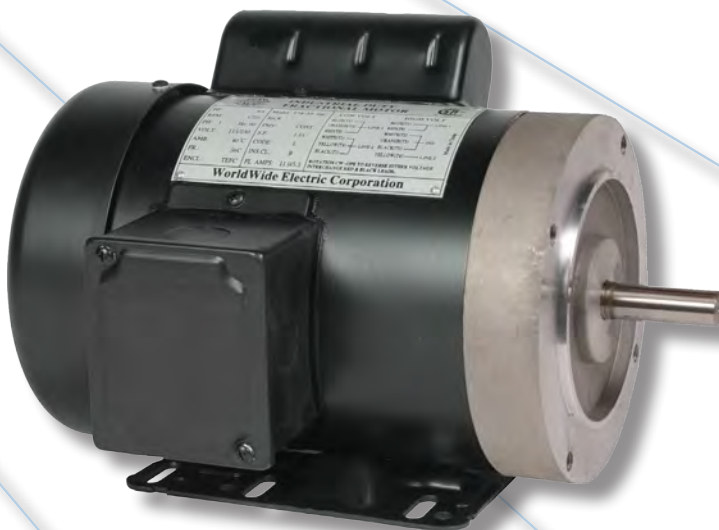
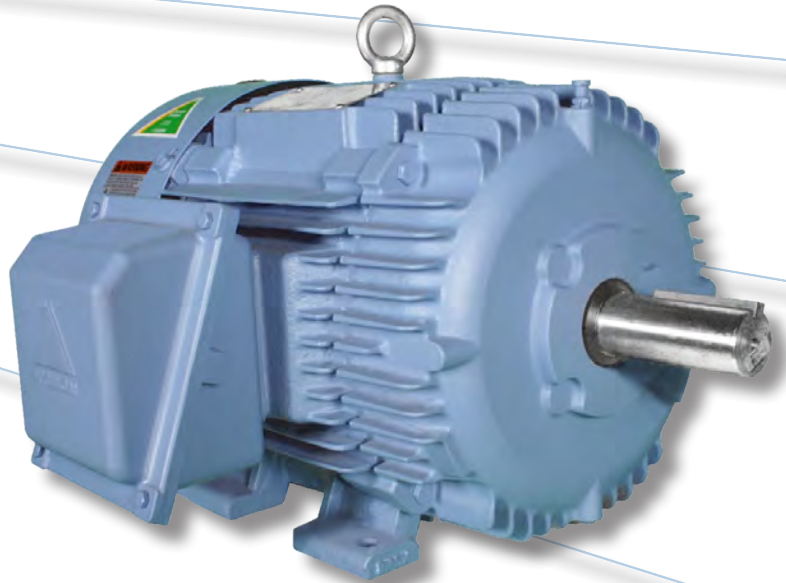
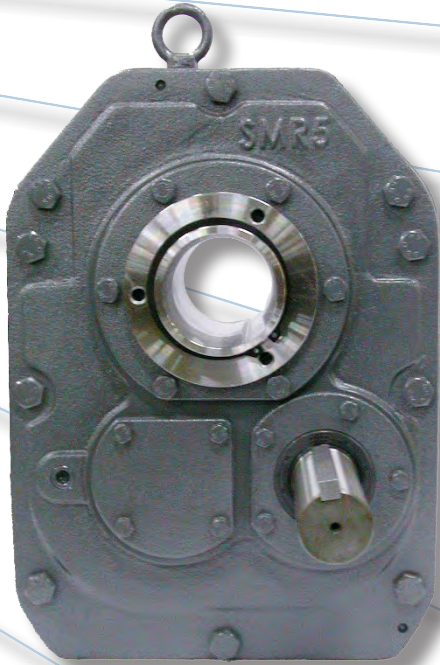


FULL LINE PRODUCT OVERVIEW

MOTORS / MOTOR CONTROLS / GEAR REDUCERS





ELECTRIC MOTORS



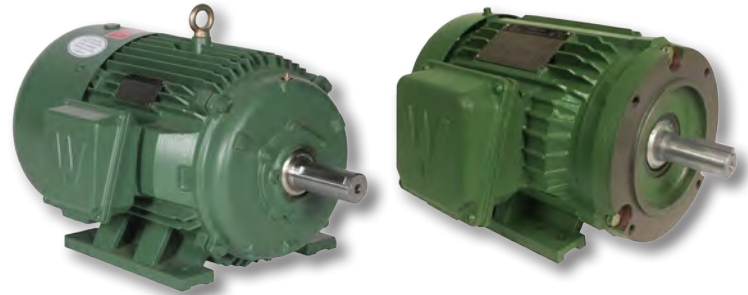
1/3 HP - 1,000 HP MOTORS IN STOCK!!!

◦ **WorldWide Electric Brand:**

- Premium Efficiency T & TC-Frame
- Premium Efficiency Explosion Proof T & TC-Frame
- Advanced Design Rock Crusher
- Farm Duty Extra High Torque
- Permanent Magnet DC
- Stainless Steel
- Oil Well Pump
- 56C-Frame

◦ **HYUNDAI Brand:**

- Premium Efficiency T & TC-Frame
- Premium Efficiency Explosion Proof T & TC-Frame
- Severe Duty
- IEEE-841
- Medium Voltage



▲ **HYUNDAI**



▲ **HYUNDAI**



▲ **HYUNDAI**



▲ **HYUNDAI**



MOTOR CONTROLS

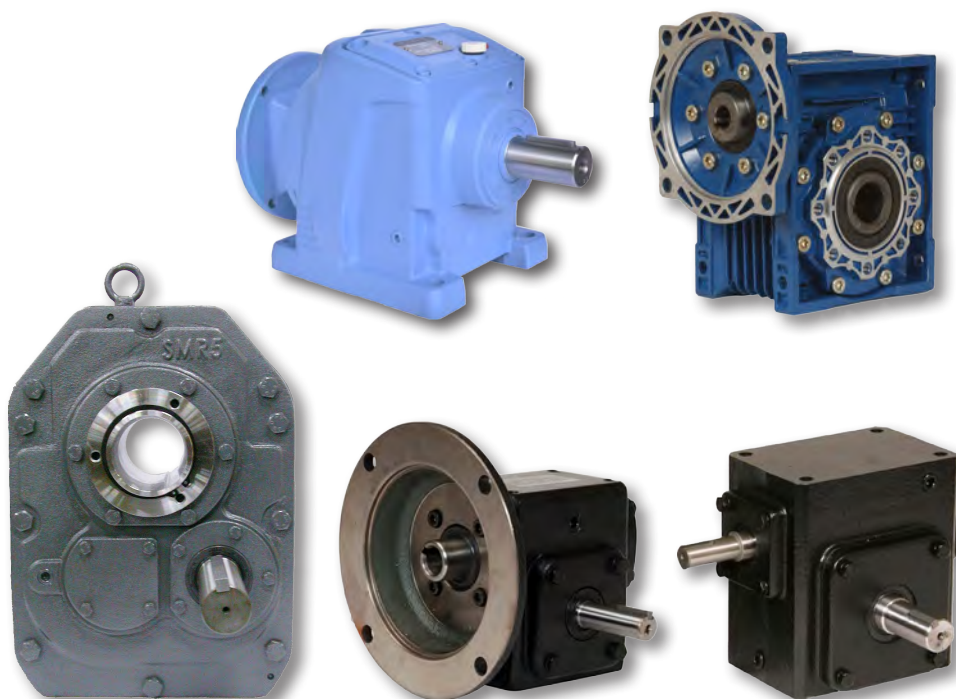


- HYUNDAI Variable Frequency Drives
- HYUNDAI Enclosed Drive Packages:
Heavy Duty, Positive Displacement,
Pump Jack and Irrigation Drive
- WWE Heavy Duty Soft Starters:
Reduced Voltage, Deep Well
and Irrigation
- Irrigation Pump Panels
- Combination Starters
- Across-Line Starters
- Definite Purpose Contactors
- IEC Contactors
- Overload Relays
- Safety Switches
- Transfer Switches
- Pressure Switches
- Alternator Relays
- Drum Controllers
- AC Drives
- Pilot Devices



GEAR REDUCERS

- "Ultimate" Shaft Mount Reducers:
 - Ratio: 9:1 (sizes 2-6)
 - Ratios: 15:1 & 25:1 (sizes 2-9)
 - Drop-in replacement for all major makes
- Helical Inline Speed Reducers:
 - Box Sizes 37-147; Ratios 5:1-120:1
 - Cast iron housing for unquestioned strength and reliability
- Cast Iron Worm Gear Reducers:
 - Box Sizes: 1.33-3.25
 - Ratios: 5:1-60:1
 - Interchangeable with all major makes
 - Units filled with synthetic oil
- Aluminum Worm Gear Reducers:
 - Two bearings on input and output shafts
 - NEMA motor input flanges





7 WAREHOUSE LOCATIONS

SAME AND NEXT DAY DELIVERY AVAILABLE

WorldWide Electric's mission is to be the most customer and employee focused organization in the markets within which we compete, offering products and a workplace that exceed expectations for quality, performance, reliability and market innovation.



WorldWide Electric Corporation
P.O. Box 307, Pittsford, NY 14534 USA
1-800-808-2131
www.worldwideelectric.net



04092014-FLP